



Bermuda Signature School Diploma

Graduation Requirements



GOVERNMENT OF BERMUDA
Ministry of Education

Table of Contents

Introduction page 3

Credits required for graduation page 6

Additional requirements for graduation page 9

Titles of the Bermuda Signature School Diploma page 12

Students accessing learning support page 13

Conclusion page 14

Quick reference guide page 15

Version 1.0, published March 2023 with the approval of the Ministry of Education.

This booklet explains the graduation requirements for students who entered CedarBridge Academy or The Berkeley Institute in September 2022 and will enter in September 2023.

A new way forward for Bermuda: Signature Schooling

As a part of major changes underway in the Bermuda Public School System, Signature Schools, offering Signature Learning Programmes which blend academic with real-world, project-based learning focused on technical and industry skills within and beyond school, opened in September 2022 at The Berkeley Institute and CedarBridge Academy.

Signature Learning Programmes have been developed in collaboration with teachers, students, parents, community members, and business leaders. Since 2020, Bermudians have been invited to participate in design teams to develop design principles for Bermuda's public schools, identify the priorities for school transformation, share ideas for what a new approach to schooling and learning might look like, and work alongside system leaders and subject-matter experts to design new curricula, teaching practices, learning environments, graduate outcomes, and approaches to teacher professional learning.

The Graduation Requirements

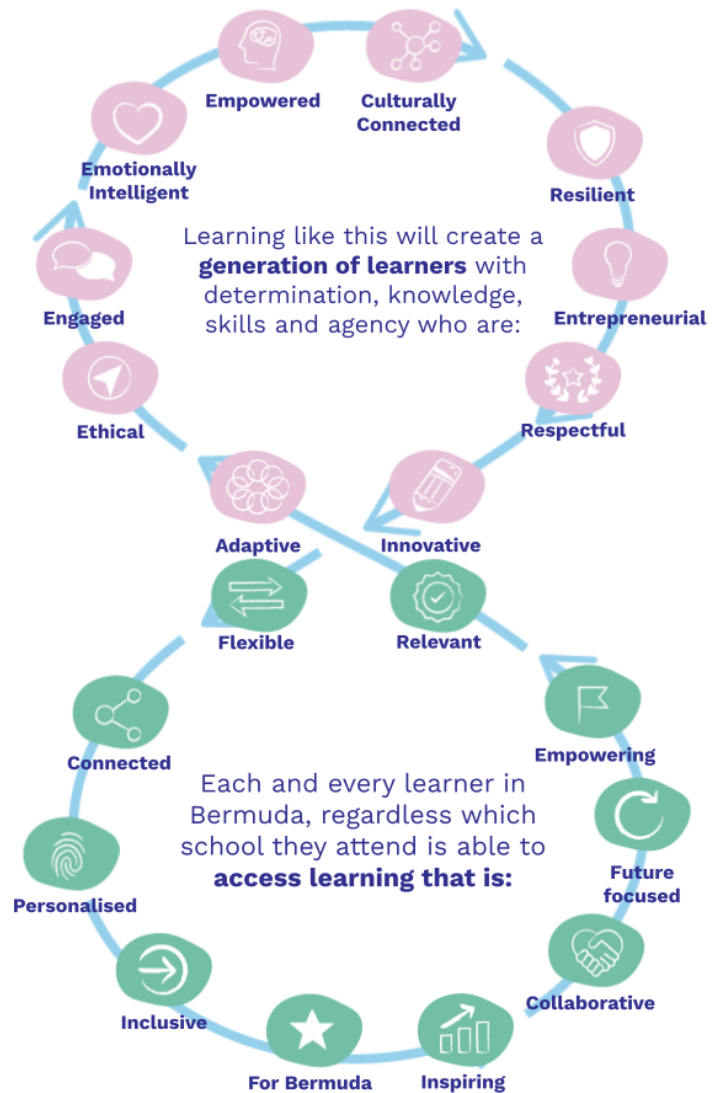
These graduation requirements - the Bermuda Signature School Diploma (BSSD) - will demonstrate to employers that holders of the BSSD have the necessary experience, skills, knowledge, values, and relationships to take up jobs or apprenticeships in their chosen profession or trade, and contribute to the requirements for entry into colleges and universities.

The graduation requirements:

- Reflect the Bermuda Public School System’s vision for learning and begin to give more emphasis to ‘flexible’, ‘personalised’, ‘relevant’, and ‘for Bermuda’ learning, and
- Enable each and every student to have increasing ‘agency’ through having more choice in what they learn.

‘Entrepreneurialism’ is embedded within each of the Signature Learning Programmes.

The Bermuda Public School System’s Vision for Learning



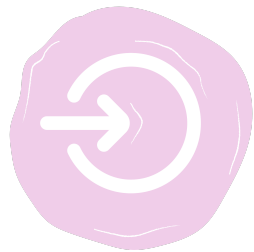
The vision for the Bermuda Public School has two principles that clearly guide provision for students requiring learning support:

Each and every learner in Bermuda, regardless of the school they attend, is able to access learning that is:



Personalized:

Learning that is designed around learners’ strengths and interests; starting points and progress; social and emotional needs; and personal goals.



Inclusive:

Learning that ensures every young person has access and can participate in engaging, high-quality learning on the island, regardless of ability, gender, socio-economic status, religion, race and ethnicity, or culture.

Students accessing learning support, as outlined in their Individual Education Plan (IEP), as well as those identified as English Language Learners, will receive guidance and learning support to participate in Signature Learning Programmes as they work towards achieving the requirements of the BSSD.

Students in our Specialised programmes: Functional Skills and Autism Spectrum Disorder (ASD) will, in addition, have opportunities to take up dual enrolment with tertiary institutions if they meet the criteria.

Credits required for graduation

To graduate from the Bermuda Public School System and earn the BSSD, each and every student will need to obtain a minimum of twenty-four (24) credits. While there is a minimum, we encourage each and every student to be ambitious, to reach beyond that minimum, and for some university courses and careers it will be essential that students do so.

Of the 24 credits:

- Fifteen (15) credits must be 'core' credits drawn from subjects and courses that all students will take, and
- Seven and a half (7.5) credits must be obtained from the Signature Learning Programmes.

To fulfill the graduation requirements students will need



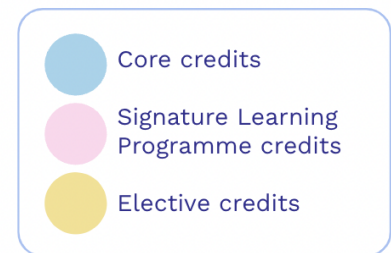
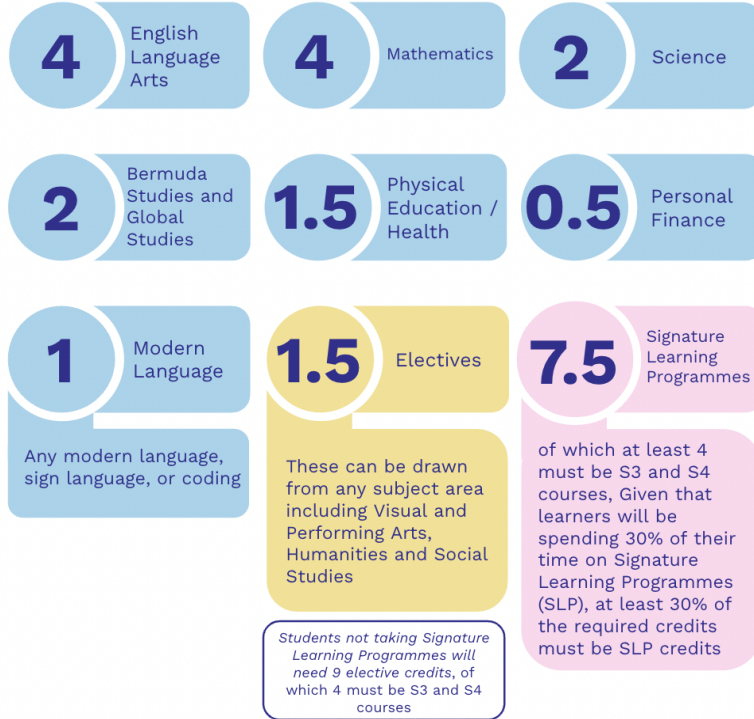
A minimum of 24 credits

- 15 Core credits
- 7.5 Signature Credits
- 1.5 Elective credits

Why 7.5 credits?

The majority of students will have a major Signature Learning Programme taking up 20% of their time and a minor Signature Learning Programme taking up 10% of their time: 30% of each and every student's learning will be through Signature Learning Programmes - and 7.5 is approximately 30% of 24.

- The remaining one and a half (1.5) credits - 'elective credits' - can be drawn from areas such as dance, art, drama, visual arts, or even from any of the core areas.



The 15 core credits must include:

- Four (4) credits in English Language Arts.
- Four (4) credits in Mathematics. Each and every student will be able to take any mathematics course that is relevant to and aligned with their Signature Learning Programmes providing that the content is internationally recognised and meets global standards.
- Two (2) credits in Science. Students could take Combined Science I and II or individual science subjects, though if they are interested in pursuing a career in the medical profession they are encouraged to take individual science subjects.
- Two (2) credits in Bermuda Studies and Global Studies. One of these credits will be for the Bermuda Studies course. The other will be for any Global Studies course which includes social studies and humanities: economics, psychology, environmental management, history, geography. It is expected that each and every student will choose a global studies subject to align with and support their major Signature Learning Programme.

- One (1) credit in Modern Language. This can be any modern language, sign language, or coding.
- One and a half (1.5) credits in Physical Education/Health.
- Half (0.5) a credit in Personal Finance.

Five (5) of each and every student's Signature Learning Programme credits will need to come from their major Signature Learning Programme, and two and a half (2.5) from their minor Signature Learning Programme. At least four (4) of the seven and a half (7.5) credits must be upper-level credits. Students demonstrating appropriate levels of proficiency upon entering senior school can take upper-level courses in years S1 and S2.

Notes

1. Students that have decided not to take Signature Learning Programmes, will need nine (9) elective credits.
2. Students that have chosen not to have a minor will need all seven and a half (7.5) credits to come from their major.

How will appropriate levels of proficiency be determined?

Advisers and counsellors will work with each and every student, their parents and teachers to guide students as to which courses to take depending on their career and further education aspirations and advise students on the various levels of flexibility within the Signature Learning Programmes.

Additional requirements for graduation

To fulfil the graduation requirements, students will also need to obtain



A cumulative GPA of at least 2.0 (on 4.0 scale)



An internationally recognized qualification in ELA, Mathematics, and Science (e.g. Cambridge, Edexcel, Penn Foster)



An internationally recognized Employability Skills Certificate



An internationally recognized Digital Competency Certificate (e.g. City & Guides, Microsoft, Google)

Grade Point Average (G.P.A.)

To graduate with the BSSD each and every student will need to obtain a cumulative Grade Point Average (G.P.A.) of at least 2.0 on a 4.0 scale, though it should be noted that many universities require a G.P.A. of greater than 2.0.

Students graduating with a G.P.A. of 3.5 to 3.79 will be recognized as having achieved Honours and those with a G.P.A. of 3.8 or better will be recognized as having achieved Honours with Distinction.

What is a Grade Point Average (G.P.A.)

The G.P.A. is a number that indicates how high you scored in your courses on average. Using a scale from 1.0 to 4.0, your G.P.A. tracks your progress during your studies. This number is used to assess whether you meet the standards and expectations set by the Bermuda Public School System and the bodies that accredit the curriculum and is used by higher education institutions as a part of the admissions process.

Internationally recognized qualifications

Internationally recognized qualifications in English Language Arts, Mathematics, and Science are also required so that those with the BSSD have the opportunity to enter employment or further and higher education internationally as well as in Bermuda.

Based on readiness, potential, and aspiration, each and every student will be guided toward an appropriate international certification from an approved board such as Edexcel, AQA, CXC, City & Guilds and/or IGCSE.

Internationally recognized certificates

Each and every student will also need to obtain an international certification in Employability Skills (e.g. City & Guilds) and an internationally recognized Digital Competency Certificate (e.g. City & Guilds, Microsoft, Google).

Learner Portfolio

The final component required for each and every student to graduate with the BSSD is a Learner Portfolio showing their growth and ability..

An increasing number of employers and universities are placing less and less reliance on qualifications and more and more on demonstrations of what students have done and can do, as well as what they have learnt.

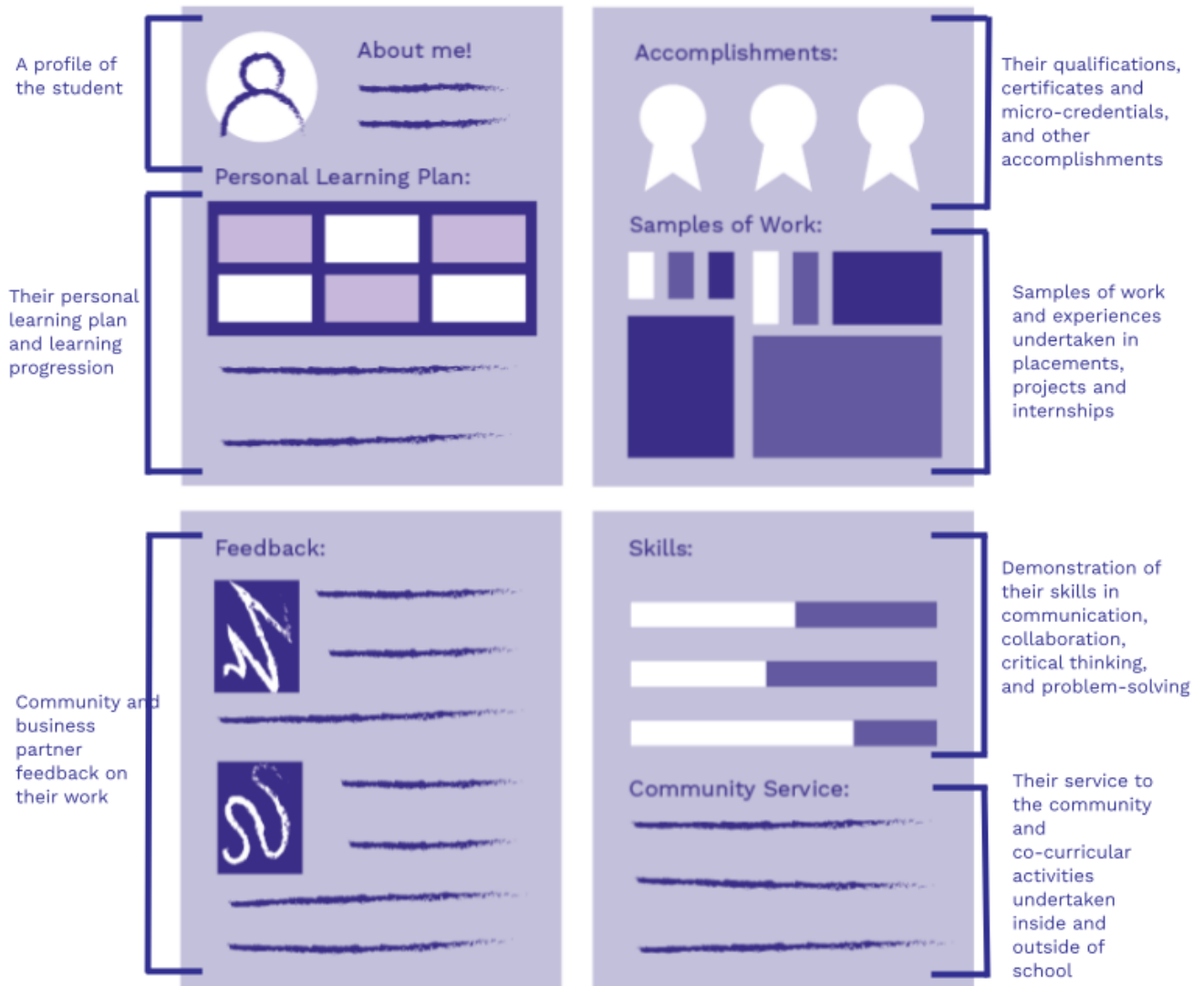
The learner portfolio will form the basis of termly assessments via student-led conferences and public exhibition of student work.

Therefore, students will be supported to develop a portfolio that contains:

- A Learner Profile
- A personal learning plan and progress, and
- A list of qualifications and awards accumulated, including any micro-credentials that have been accredited by the Department and that students have obtained.

This portfolio will also capture each and every students' involvement with community and business partners along with feedback received from them

and their engagement in community service and co-curricular activities.



What is a micro-credential?

A micro-credential is a short, competency-based recognition that allows a learner to demonstrate mastery in a particular area. Micro-credentials can 'add up' to larger credentials, certifications, and qualifications but are of value in and of themselves.

Titles of the Bermuda Signature School Diploma (BSSD)

Each student who graduates successfully will receive a personalised Diploma.

Bermuda Signature School Diploma (name of major Signature Learning Programme: track with name of minor Signature Learning Programme: track)

For example:



Bermuda Signature School Diploma
(Major in Trades and Professions: Textiles and Design, with a minor in STEM: Creative Technologies)



Bermuda Signature School Diploma
(Major in Health and Social Care: Holistic and Allied Health Care Services, with a minor in Financial and Insurance Services: Accountancy)

Bermuda School Certificate

Students enrolled in special programmes such as the ASD and Functional Skills programmes can obtain the **Bermuda School Certificate (BSC)** providing they have completed the requirements identified in their IEP. These students will have access to Signature Learning Programmes based on their IEP goals and objectives.

Students accessing learning support

Students on IEPs will have access to different levels of support.

Support

Academic support for students on an IEP to meet the requirements for the BSSD.

Level of Support:

The regular teacher is responsible for the academic content and delivery of the curriculum.

The Learning Support Resource Teacher and, in some cases, the Paraeducator assigned to students, continue to offer academic support, reinforcements, and accommodations mainly in the core subject areas.

Support offered by the Learning Support Resource Teacher and or Paraeducator can take on many forms depending on the level of support that is required at any given time:

- In-class support.
- Pull-out sessions.
- Testing accommodations.
- Monitoring individual student goals and objectives outlined in the IEP.

Functional Skills/Autism Spectrum Disorders

The focus is on teaching functional skills, academic, communication, socialisation, and behaviour skills to students with moderate to severe intellectual disabilities and those on the Autism Spectrum. The programme is student-centred, not curriculum centred.

Conclusion

These Graduation Requirements have been developed to increasingly allow each and every student to:

- Follow their passions and interests
- Build on their talents and capabilities; and
- Achieve their career and further education aspirations.

In doing so, this will allow each and every student the greatest opportunity to compete locally and contribute globally.

Should you have any questions, please do not hesitate to contact the teachers, student services team or leadership team at each Signature School.

Quick reference guide

Graduation requirements for students entering S1 in Sept 2022 or Sept 2023
A minimum of 24 credits
A minimum cumulative GPA of 2.0 (on 4.0 scale)
An internationally recognised qualification (eg AQA, Cambridge, Edexcel, CXC) in ELA, Maths, and Science
An internationally recognised Employability Skills Certificate
An internationally recognised Digital Competency Certificate (eg C&G, Microsoft, Google)
<p>A digital portfolio showing the growth and ability of the student; both what they know and what they can do. It will include:</p> <ul style="list-style-type: none">❖ A profile of the student❖ Their personal learning plan and learning progression❖ Their qualifications, certificates and micro-credentials, and other accomplishments❖ Samples of work and experiences undertaken in placements, projects and internships❖ Community and business partner feedback on their work❖ Demonstration of their skills in communication, collaboration, critical thinking, and problem-solving❖ Their service to the community <p>An increasing number of employers and universities are placing less and less reliance on qualifications and more and more on demonstrations of what students have done and can do, as well as what they have learnt.</p>

The minimum number of credits required in each subject for students entering S1 in Sept 2022 or Sept 2023	
English Language Arts	4 credits
Mathematics	4 credits
Science	2 credits
Bermudian Studies and Global Perspectives	2 credits
Modern Language Any modern language, or sign language, or coding	1 credit
Physical Education/Health	1.5 credits
Personal Finance	0.5 credit
Signature Learning Programmes of which at least 4 must be upper (S3/S4) level Given that learners will be spending 30% of their time on Signature Learning Programmes (SLP), at least 30% of the required credits must be SLP credits	7.5 credits
Electives These can be drawn from any of the above subject areas, or Visual and Performing Arts, History, Geography, Social Studies	1.5 credits